



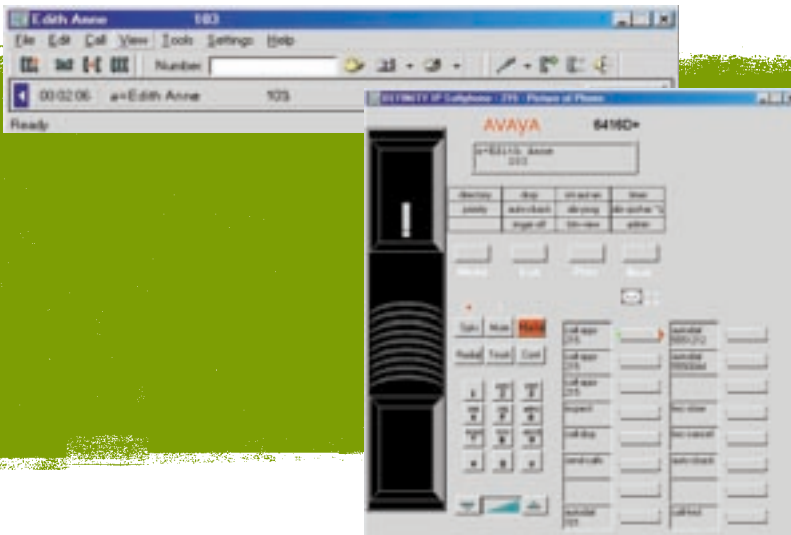
IP Softphone R2

The Avaya IP Softphone R2 is the second generation of the Avaya IP Softphone.

The IP Softphone R2 is a client-based telephony application for the desktop PC or laptop. iClarity IP Audio is integrated in the application to provide best-in-class voice over IP quality for the road warrior configuration. Toll quality audio is provided by the telecommuter configuration. With two easy-to-use user interface choices, the Avaya IP Softphone R2 provides access to all DEFINITY® station features (except call center agent features). Its Lightweight Directory Access Protocol (LDAP) client allows access to LDAP-compatible databases. The Avaya IP Softphone R2 is CTI/TAPI-enabled.

Features

- Voice over IP configuration (road warrior)
- Dual connection (telecommuter) for toll quality audio
- Choice of two easy-to-use graphical user interface: Call Bar View & Phone Picture View
- Multiple call appearances, Conference, Transfer, Hold, Mute, Redial, Volume control
- Access to DEFINITY station features (except for call center agent features) and buttons programmed on the user's telephone
- Programmable features for speed dials or functions
- Productivity tools - Phonebook, Call Log, LDAP Directory client
- Launch calls from TAPI-compliant Personal Information Managers
- Integrated iClarity IP Audio
- G.711, G.729a, G.723.1a audio voice codecs
- Multi-language support: Brazilian Portuguese, English, European French, German, Japanese, Simplified Chinese, and Latin American Spanish



Minimum Requirements

- DEFINITY Release 8.2 or later
- DEFINITY IP Solutions administered for the Avaya IP Softphone R2

- IBM® PC-compatible PC with the Intel Pentium® 200 MHz (300 MHz recommended for Road Warrior) or compatible processor
- Hard disk with at least 30 MB of space available
- 64 MB of RAM for Microsoft Windows NT® 4.0 Server or Workstation with Service Pack 4.0, 128 MB of RAM for Microsoft Windows 2000 Server or Professional, and 32 MB (64 MB recommended for Road Warrior) for Microsoft Windows 98. Windows 95 is not supported.
- Sound card supports full duplex operation (for the Road Warrior and stand-alone H.323 configurations only)
- A speaker/headset, and a microphone (for the Road Warrior and stand-alone H.323 configurations only). Recommend external microphone for laptops.
- Second telephone line for telecommuter (dual connect) configuration only
- Network Interface Card (NIC) for local area network (LAN) connectivity and/or a modem (28.8 Kbps or faster) for dial-up networking

Supported Terminals:

Call Bar View

- 8405D
- 8410D
- 8411D
- 6408D+
- 6416D+
- 6424D+
- 4612
- 4624

Picture of Phone View

- 8410D
- 6408D+
- 6416D+
- 6424D+
- 4612
- 4624

Headset Recommendations:

One-earphone category

- Plantronics SR1™

Two-earphone category

- Plantronics LS1™
- Plantronics HS1™

Sound Card

Recommendations For:

Desktop Computers

- Crystal Wave™
- Diamond Monster Sound
- Sound Blaster Live! X-gamer
- Turtle Beach Quadzilla
- Turtle Beach Montego II
- Winnov Videum

Laptop Computers

- Crystal PnP Audio System
- ESS Solo by ESS Technology
- Maestro Wave by ESS Technology
- Neo Magic Magic Media 256 AV Audio
- Yamaha DS-XG Audio System
- Yamaha OPL3-SAX WDM